

How to make a chesspattern on a leg of pluderhosen

By: Göran Hasslar after long hours of thinking and testing

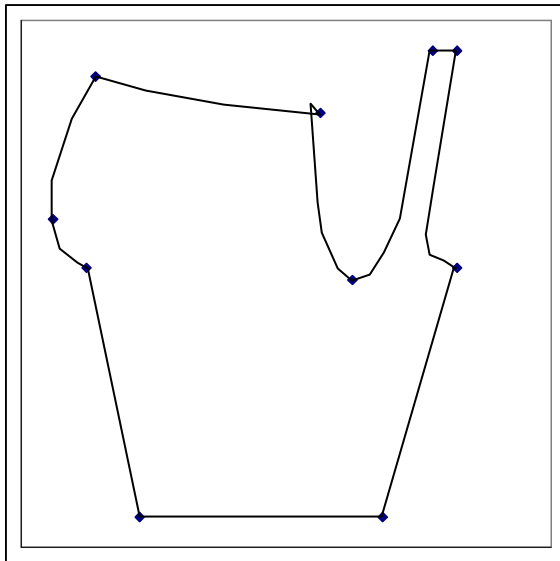
What you need:

- Linen for binding layer of the hosen
- Silk for pluder
- Wool, two layers in different colors
- Cheap cloth to make a template
- Scissor
- Measure tape
- All the rest material for basic sewing
- Knowledge of how to make a basic pluderhosen pattern

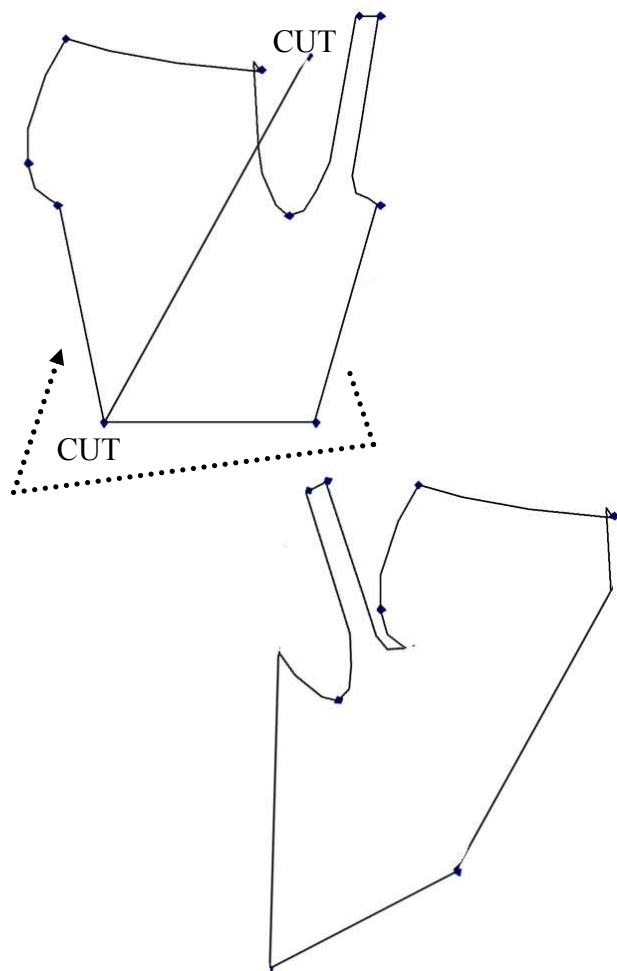
So basically what to do is to have one layer in linen that will be used as a binding layer. To which one layer of silk and two layer of wool was added to.

The linen layer looks like an ordinary pluderhosen pattern that fits smoothly.

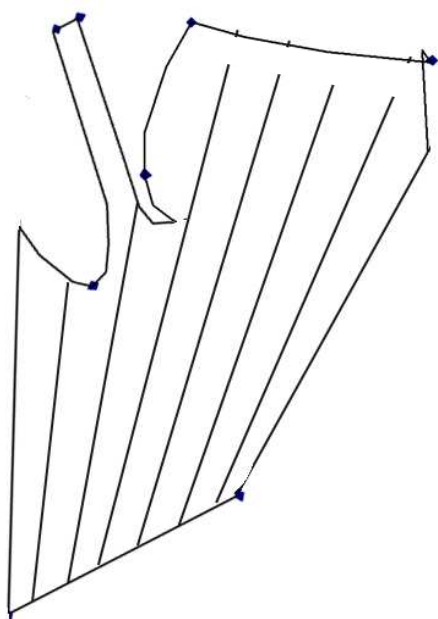
The silk layer is somewhat larger than the binding layer (+5 cm to all sides).



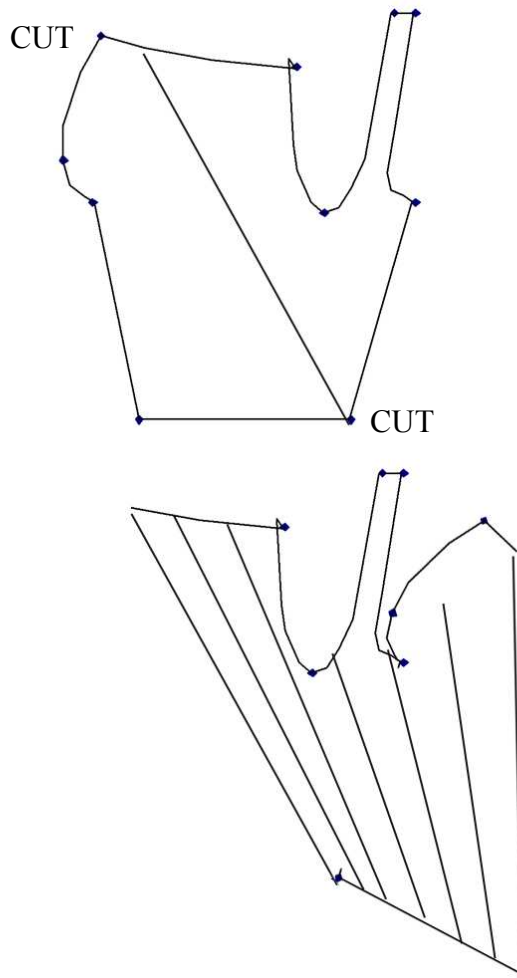
The wool layers that will form the checker-pattern is made by having a template based on the basic pluderhosen form (same as the linen layer). Then cut it diagonally across and put them side to side again (see picture below). Make the template for the wool in some kind of cheap cloth and not the wool you will use. And of course the wool layer shall not have any seam but made in one piece each.



And then you slice it in the width of the wanted checker size. Save at least 3 cm in the upper part so that you can seam it to the base and with the other layers.



Time for the second layer of wool. Do the same thing, but mirror the cutting line.



Now you can sew all the four layers (binding layer, pluder silk and two layers of wool) together at the top and then the base and the pluder together in the inner seam along the leg. Then rotate and interlink the two wool layers to form a complete leg. Make a seam at the knee to keep it together.

Happy constructing and good luck.

/Göran